

FIRE
COMPARTMENT
DETAILS

TYPE

EPK-01-EN

FASTENING CEILING TO PIPE BEAM, VERTICAL SECTION

EPK-02-EN

FASTENING TO CONCRETE WALL, VERTICAL SECTION

EPK-03-EN

FASTENING OF CONTINUOUS ELEMENT TO STEEL BEAM

EPK-04-EN

HANGING CEILING, VERTICAL SECTION

EPK-05-EN

FASTENING OF ELEMENT GROOVE, VERTICAL SECTION

EPK-06-EN

ELEMENT AS A MAINTENANCE ROUTE, VERTICAL SECTION

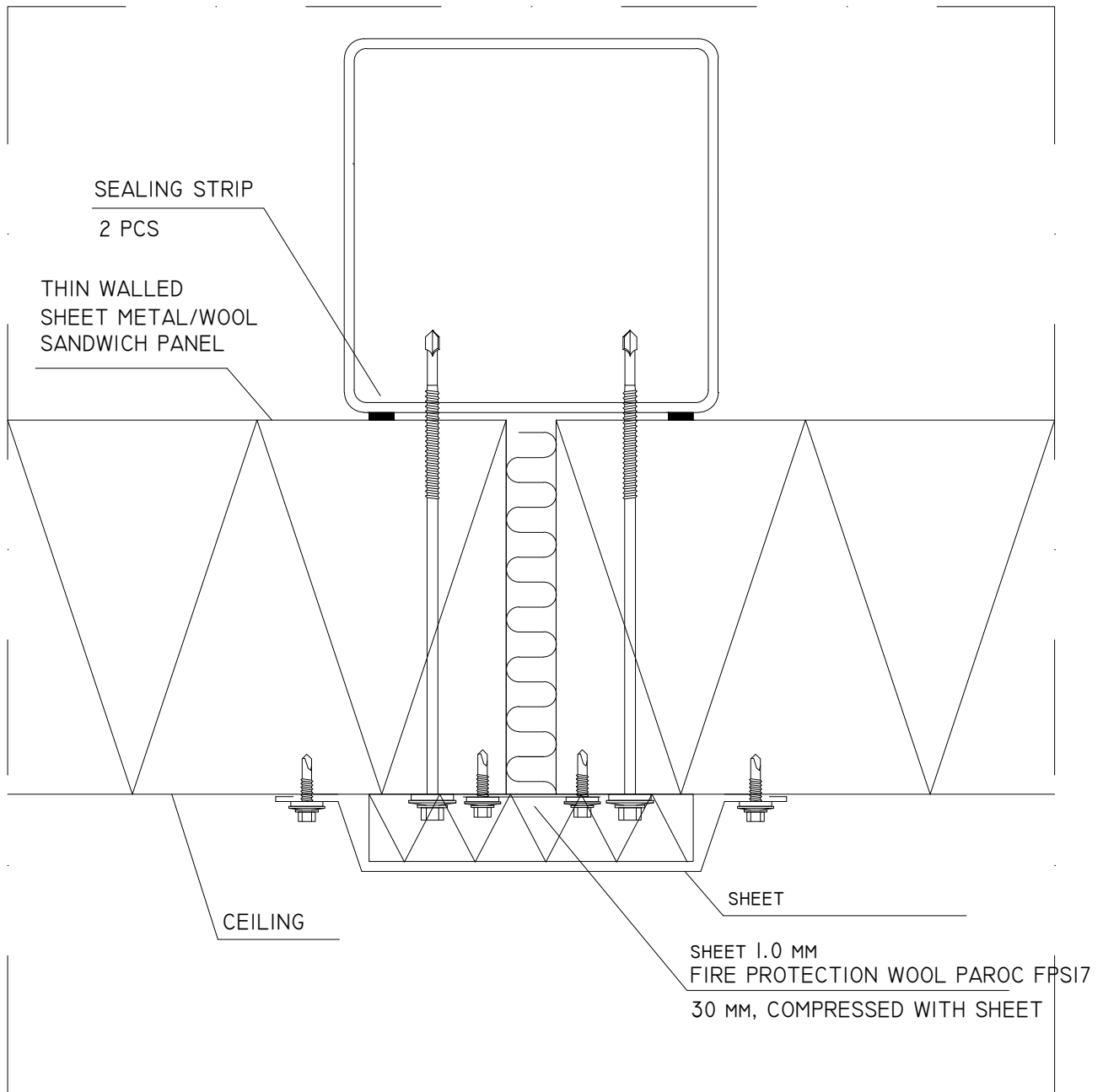
TURUN PELTI JA ERISTYS LTD, ALL RIGHTS
RESERVED



TURUN PELTI JA ERISTYS OY
VARESPELLONTIE 10
21500 PIIKKIÖ

DATE
06.2020

TPE FIRE COMPARTMENT CEILING DETAILS
SHEET OF CONTENT



GENERAL GUIDANCE

ELEMENT SPACING ~ 20 MM, CLOSED WITH DENSE WOOL SEALING. THE MINIMUM EDGE DISTANCE OF THE BRACKET IS 30 MM FROM THE EDGE OF THE PANEL. MINIMUM SUPPORT SURFACE FOR THE PANEL 50 MM. IN A FIRE-RATED INSTALLATION, THE SUPPORT STRIP AND BRACKETS ARE COVERED WITH GLUED FIRE WOOL (PAROC FPSI7), WHICH IS PRESSED INTO PLACE WITH A SHEET METAL STRIP. A SEAL IS USED ON THE SUPPORT SURFACE IF THE PASSAGE OF STEAM IS TO BE PREVENTED.

PRINCIPLE MASTER DETAIL, NOT FOR DIMENSIONING.
TURUN PELTI JA ERISTYS LTD, ALL RIGHTS RESERVED

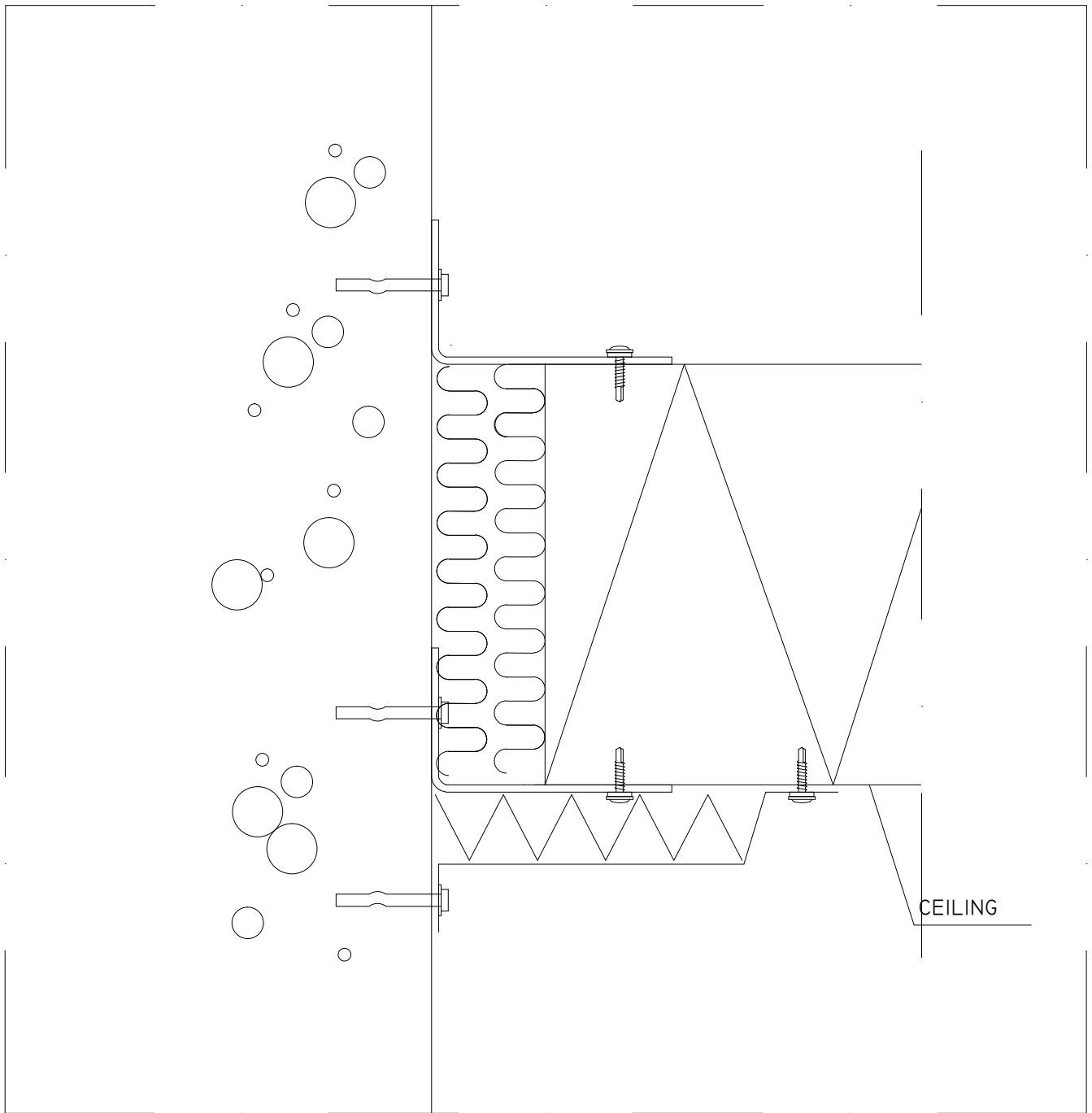
TPE

TURUN PELTI JA ERISTYS OY
VARESPELLONTIE 10
21500 PIIKKIÖ

DATE
06.2020

FASTENING CEILING TO PIPE BEAM, VERTICAL SECTION
FIRE COMPARTMENT CEILING

EPK-01-EN



GENERAL GUIDANCE

ELEMENT SPACING IN CONCRETE ~ 20 MM, CLOSED WITH DENSE WOOL SEALING. THE MINIMUM EDGE DISTANCE OF THE BRACKET IS 30 MM FROM THE EDGE OF THE PANEL. MINIMUM SUPPORT SURFACE FOR THE PANEL 50 MM. IN A FIRE-RATED INSTALLATION, THE SUPPORT STRIP AND BRACKETS ARE COVERED WITH GLUED FIRE WOOL (PAROC FPSI7), WHICH IS PRESSED INTO PLACE WITH A SHEET METAL STRIP. A SEAL IS USED ON THE SUPPORT SURFACE IF THE PASSAGE OF STEAM IS TO BE PREVENTED.

PRINCIPLE MASTER DETAIL, NOT FOR DIMENSIONING.
TURUN PELTI JA ERISTYS LTD, ALL RIGHTS
RESERVED

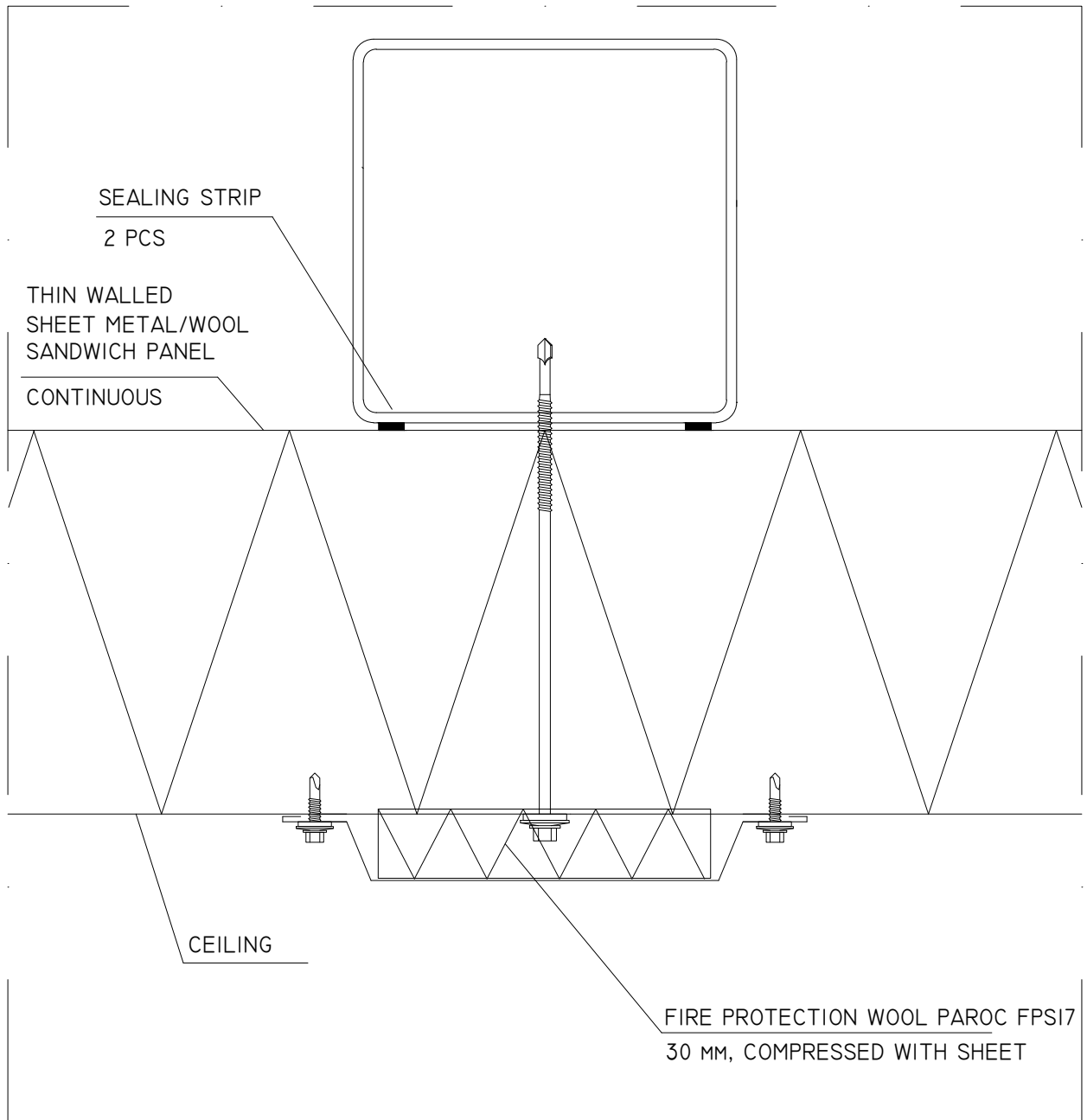
TPE

TURUN PELTI JA ERISTYS OY
VARESPELLONTIE 10
21500 PIIKKIÖ

DATE
06.2020

FASTENING TO CONCRETE WALL, VERTICAL SECTION
FIRE COMPARTMENT CEILING

EPK-02-EN



GENERAL GUIDANCE

THE DETAIL WORKED FIRE RATED UNTIL EI60 INSTALLATION. MINIMUM SUPPORT SURFACE 50 MM. A SEAL IS USED ON THE SUPPORT SURFACE IF THE PASSAGE OF STEAM IS TO BE PREVENTED.

PRINCIPLE MASTER DETAIL, NOT FOR DIMENSIONING.
TURUN PELTI JA ERISTYS LTD, ALL RIGHTS RESERVED

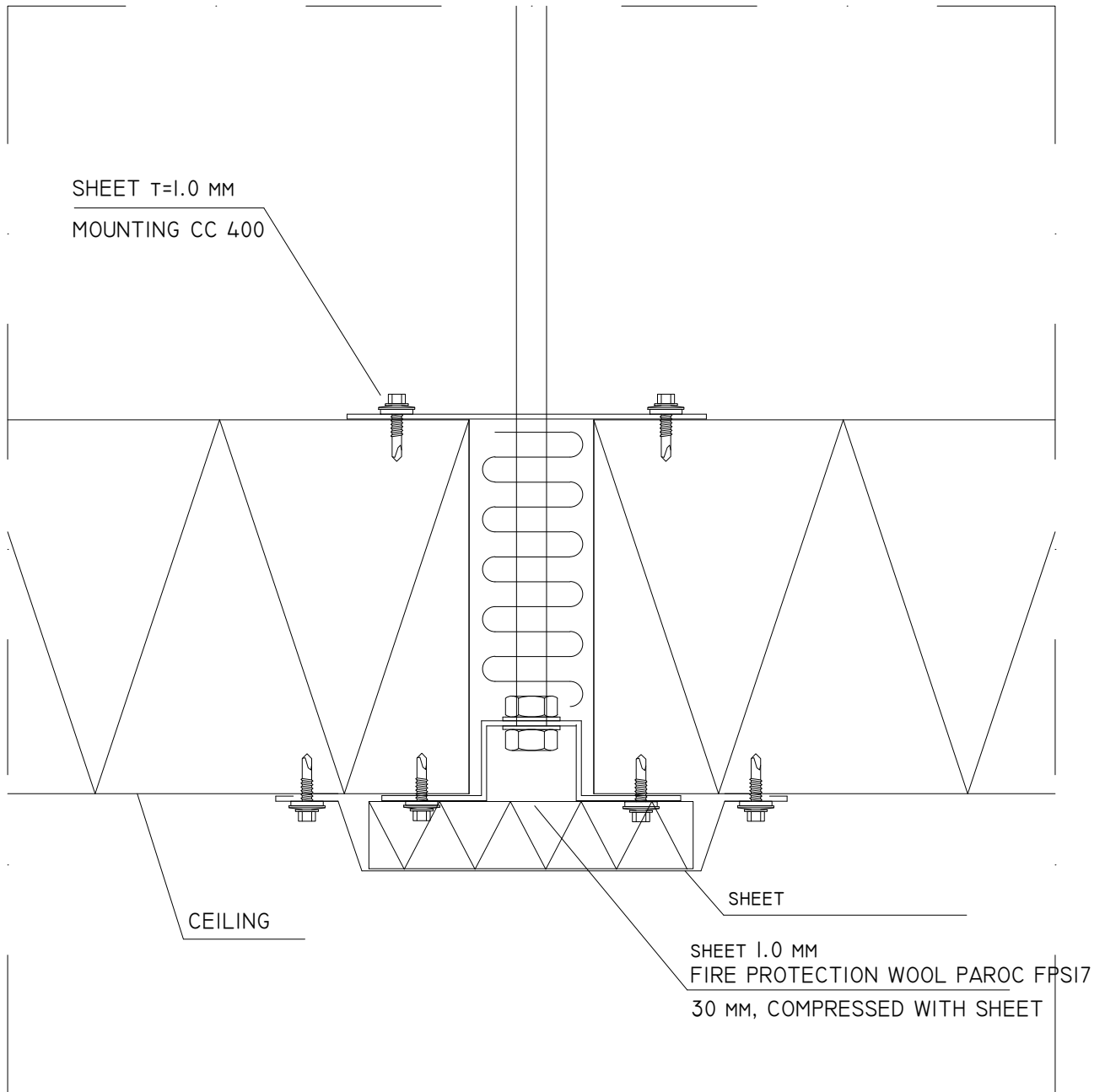


TURUN PELTI JA ERISTYS OY
VARESPELLONTIE 10
21500 PIIKKIÖ

DATE
06.2020

FASTENING OF CONTINUOUS ELEMENT TO STEEL BEAM
FIRE COMPARTMEN CEILING

EPK-03-EN



GENERAL GUIDANCE

ELEMENT SPACING ~ 60 MM, CLOSED WITH DENSE WOOL SEALING. THE MINIMUM EDGE DISTANCE OF THE BRACKET IS 30 MM FROM THE EDGE OF THE PANEL. MINIMUM SUPPORT SURFACE FOR THE PANEL 50 MM. IN A FIRE-RATED INSTALLATION, THE SUPPORT STRIP AND BRACKETS ARE COVERED WITH GLUED FIRE WOOL (PAROC FPSI7), WHICH IS PRESSED INTO PLACE WITH A SHEET METAL STRIP. A SEAL IS USED ON THE SUPPORT SURFACE IF THE PASSAGE OF STEAM IS TO BE PREVENTED.

PRINCIPLE MASTER DETAIL, NOT FOR DIMENSIONING.
TURUN PELTI JA ERISTYS LTD, ALL RIGHTS
RESERVED

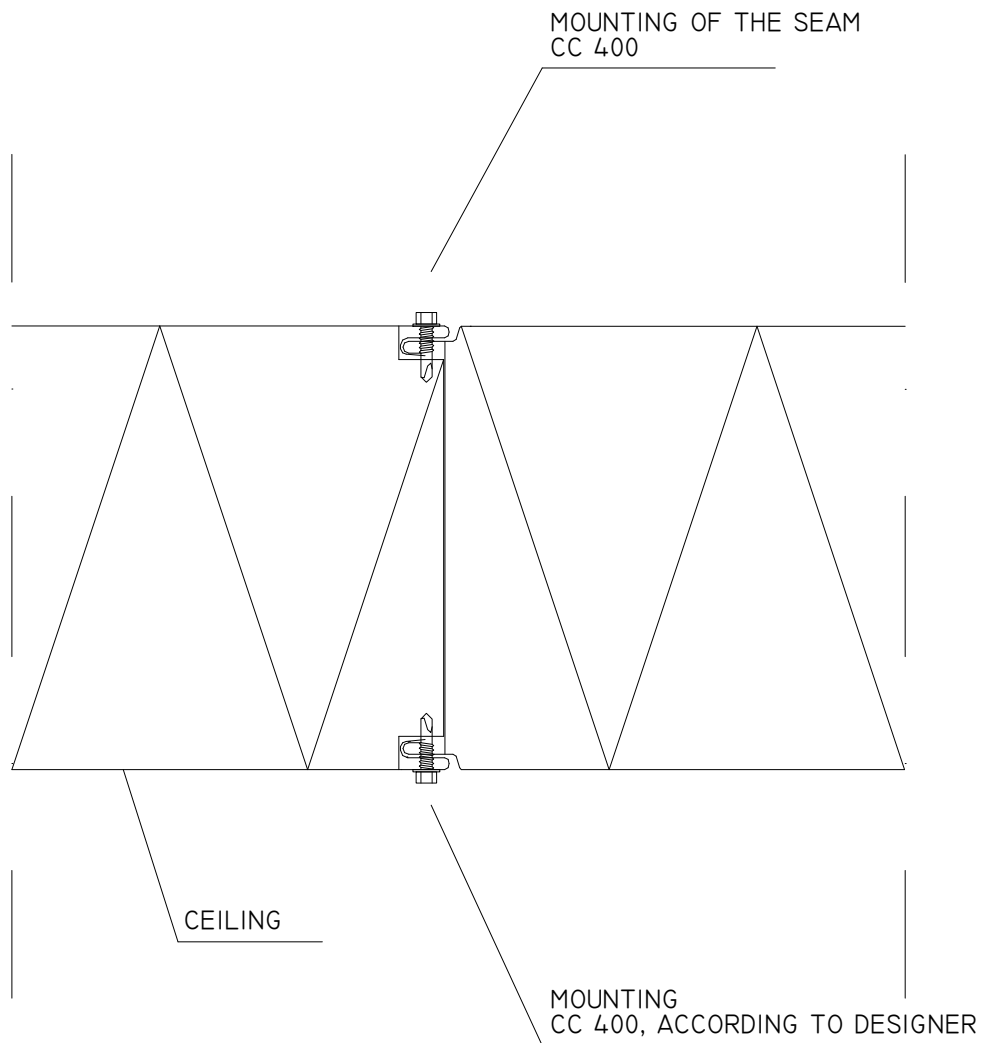
TPE

TURUN PELTI JA ERISTYS OY
VARESPELLONTIE 10
21500 PIIKKIÖ

DATE
06.2020

HANGING
FIRE COMPARTMEN CEILING

EPK-04-EN



GENERAL GUIDANCE

SEAM SCREWING IS USED IN FIRE-RATED CEILING INSTALLATIONS AS WELL AS IN SITUATIONS WHERE THE ELEMENT IS WALKED ON. THE SCREWING DISTANCE OF THE SEAM AND THE NEED ACCORDING TO THE DESIGNER. THE INTERVAL CC 400 IS USED UNLESS OTHERWISE STATED.

PRINCIPLE MASTER DETAIL, NOT FOR DIMENSIONING.
TURUN PELTI JA ERISTYS LTD, ALL RIGHTS
RESERVED

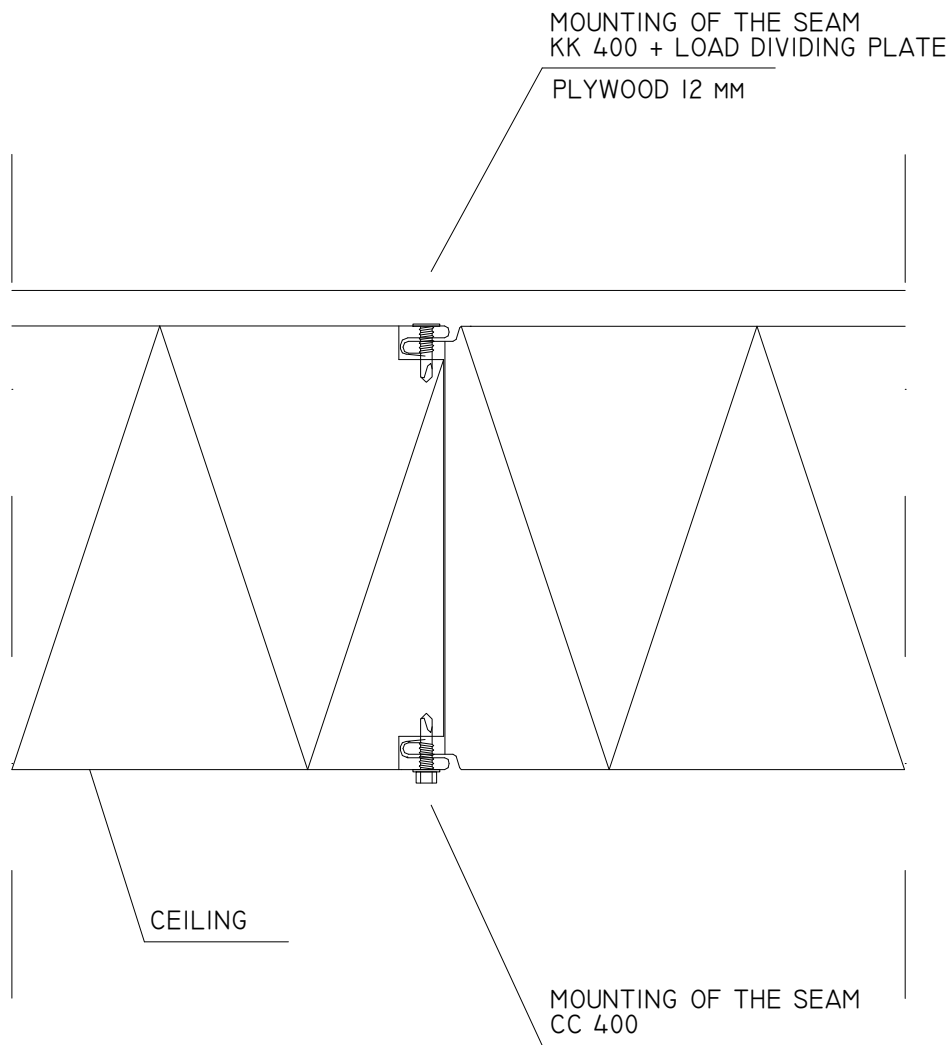
TPE

TURUN PELTI JA ERISTYS OY
VARESPELLONTIE 10
21500 PIIKKIÖ

DATE
06.2020

FASTENING OF ELEMENT GROOVE
FIRE COMPARTMEN CEILING

EPK-05-EN



GENERAL GUIDANCE

THE LOAD DIVIDING PLATE IS USED WHEN WALKING ON THE ELEMENT REPEATEDLY (E.G. ANNUAL MAINTENANCE ROUTE, ETC.). THE ELEMENT SEAMS ARE SCREWED TOGETHER. THE SCREW SPACING OF THE SEAM IS DETERMINED BY THE ELEMENT DESIGNER. THE INTERVAL CC 400 IS USED UNLESS OTHERWISE STATED.

PRINCIPLE MASTER DETAIL, NOT FOR DIMENSIONING.
TURUN PELTI JA ERISTYS LTD, ALL RIGHTS
RESERVED

TPE

TURUN PELTI JA ERISTYS OY
VARESPELLONTIE 10
21500 PIIKKIÖ

DATE
06.2020

ELEMENT AS A MAINTENANCE ROUTE
FIRE COMPARTMEN CEILING

EPK-06-EN