

EXPLOSION
WALL
DETAILS

TYPE

ER-10-EN

FASTENING TO CONCRETE COLUMN

ER-11-EN

EXTERNAL CORNER, CONCRETE COLUMN

ER-12-EN

CONCRETE COLUMN, BETWEEN CABLE ANCHORS

ER-13-EN

EXPLOSION HATCH

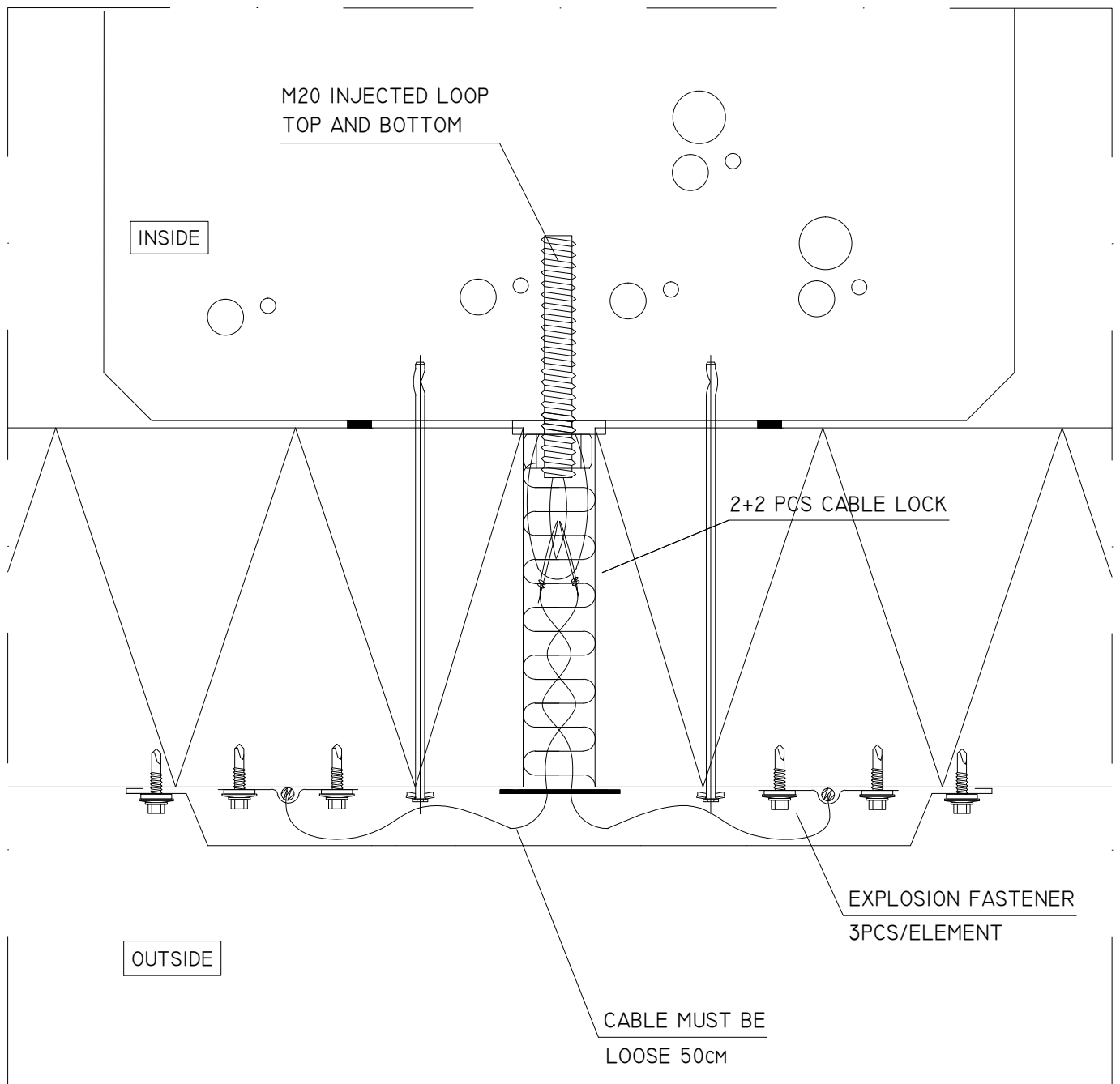
TURUN PELTI JA ERISTYS LTD, ALL RIGHTS RESERVED



TURUN PELTI JA ERISTYS OY
VARESPELLONTIE 10
21500 PIIKKIÖ

DATE
04.2020

TPE EXPLOSION DETAILS
SHEET OF CONTENT



GENERAL GUIDANCE

M20 FASTENER FOR COLUMNS BY ELEMENT DESIGNING. EXPLOSION CABLE WILL BE LOCKED TO M20 LOOP WITH CABLE LOCKS. CABLE WILL BE FASTENED WITH EXPLOSION FASTENER TO SURFACE OF ELEMENT (3 PCS/ELEMENT). OTHER GENERAL INSTRUCTIONS BY BASIC DETAILS.

PRINCIPLE MASTER DETAIL, NOT FOR DIMENSIONING.
 TURUN PELTI JA ERISTYS LTD, ALL RIGHTS RESERVED

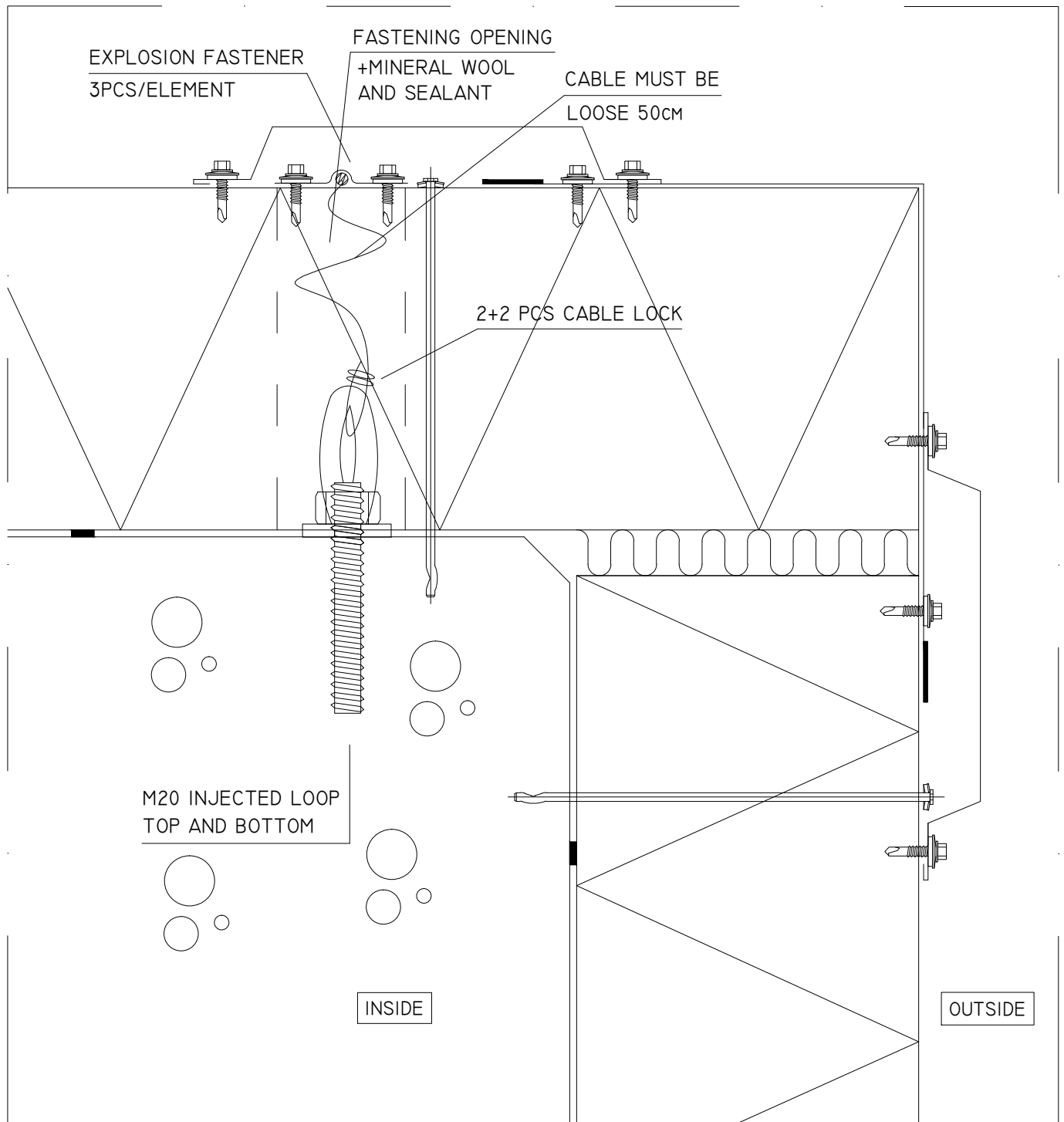


TURUN PELTI JA ERISTYS OY
 VARESPELLONTIE 10
 21500 PIIKKIÖ

DATE
 04.2020

FASTENING TO CONCRETE COLUMN
 EXPLOSION WALL, HORIZONTAL SECTION

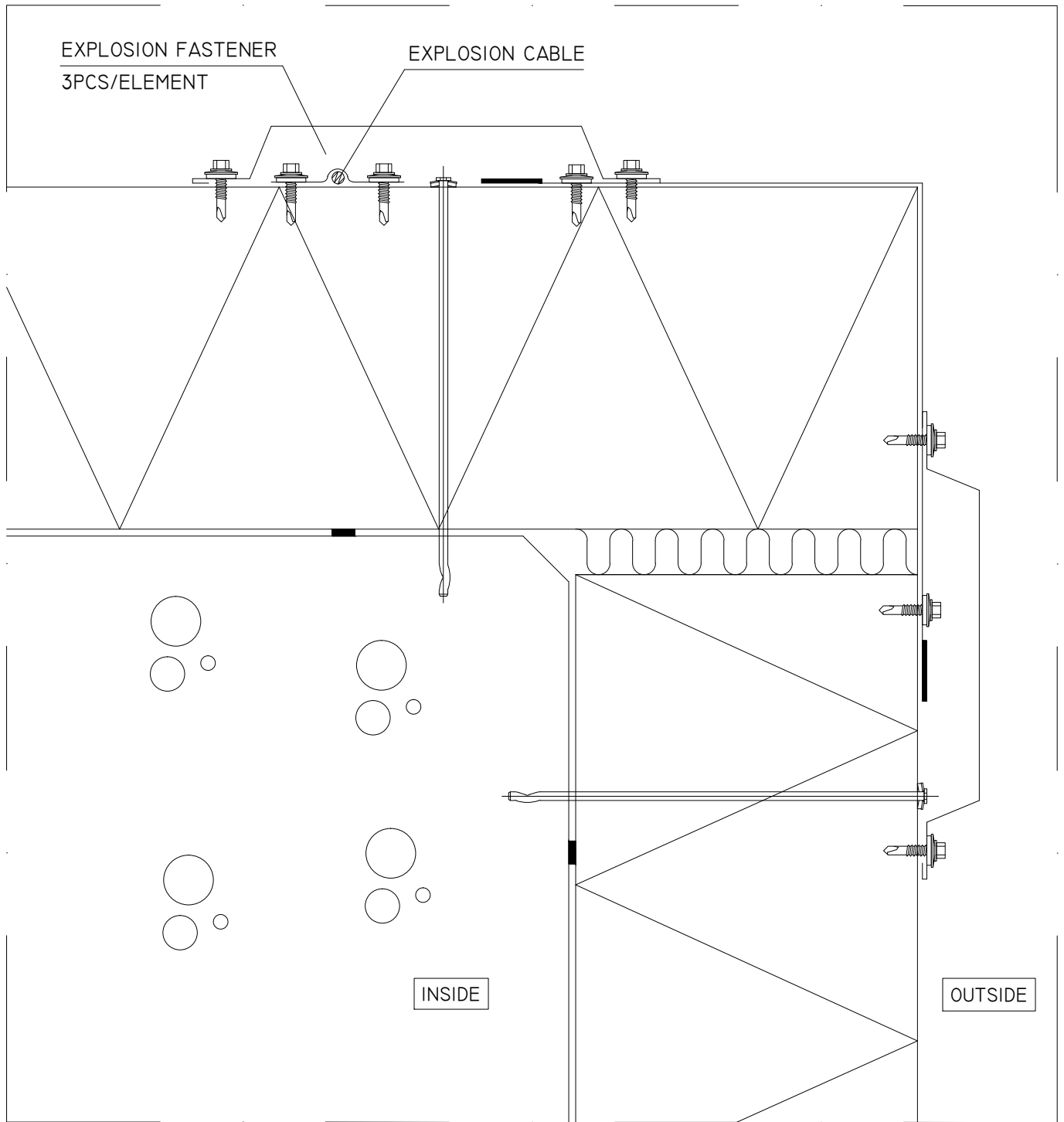
ER-10-EN



GENERAL GUIDANCE

M20 FASTENER FOR COLUMNS BY ELEMENT DESIGNING. EXPLOSION CABLE WILL BE LOCKED TO M20 LOOP WITH CABLE LOCKS. CABLE WILL BE FASTENED WITH EXPLOSION FASTENER TO SURFACE OF ELEMENT (3 PCS/ELEMENT). OTHER GENERAL INSTRUCTIONS BY BASIC DETAILS.

PRINCIPLE MASTER DETAIL, NOT FOR DIMENSIONING.
TURUN PELTI JA ERISTYS LTD, ALL RIGHTS RESERVED



GENERAL GUIDANCE

M20 FASTENER FOR COLUMNS BY ELEMENT DESIGNING. EXPLOSION CABLE WILL BE LOCKED TO M20 LOOP WITH CABLE LOCKS. CABLE WILL BE FASTENED WITH EXPLOSION FASTENER TO SURFACE OF ELEMENT (3 PCS/ELEMENT). OTHER GENERAL INSTRUCTIONS BY BASIC DETAILS.

PRINCIPLE MASTER DETAIL, NOT FOR DIMENSIONING.
TURUN PELTI JA ERISTYS LTD, ALL RIGHTS
RESERVED

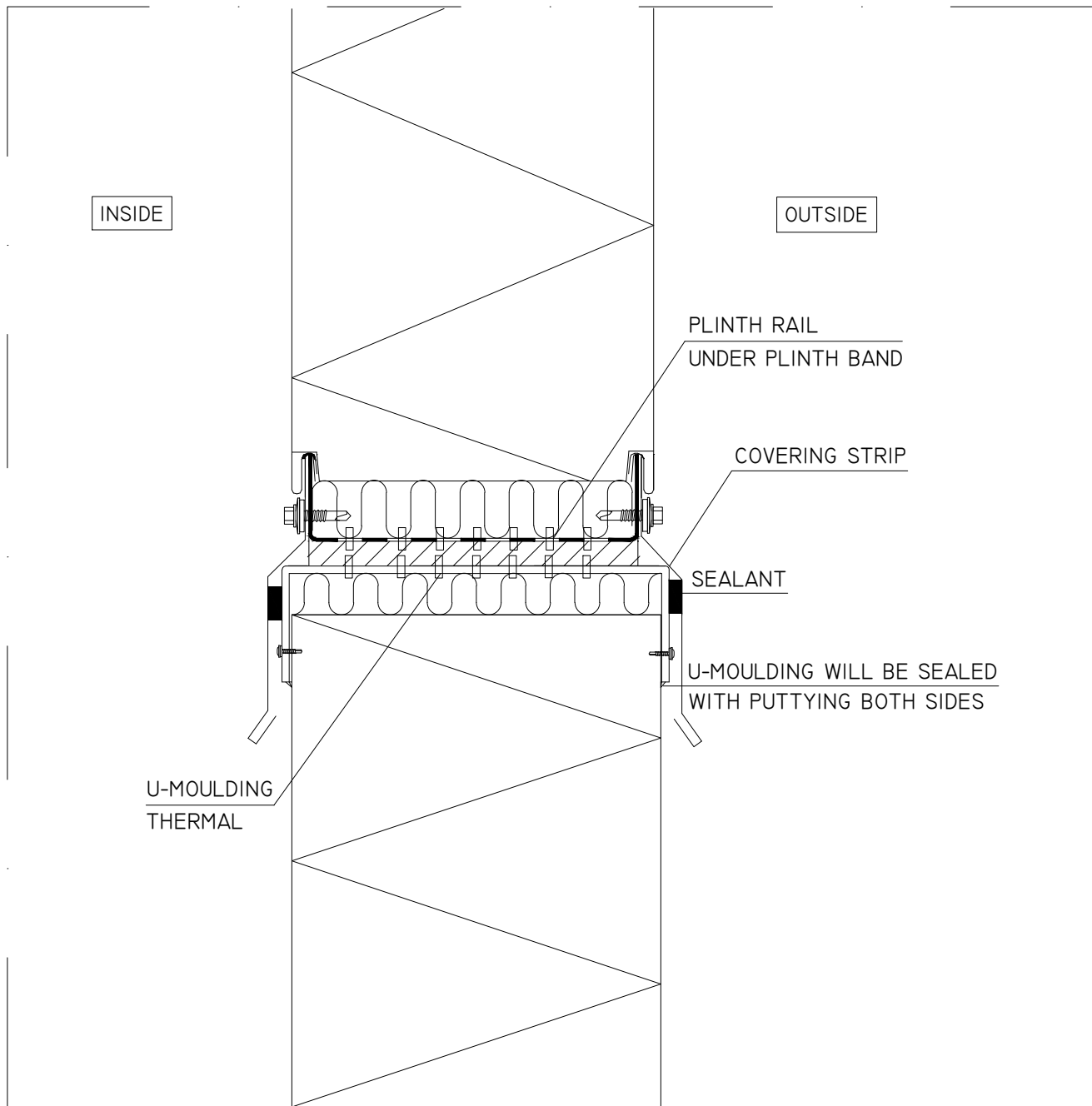
TPE

TURUN PELTI JA ERISTYS OY
VARESPELLONTIE 10
21500 PIIKKIÖ

DATE
04.2020

EXTERNAL CORNER, CONCRETE COLUMN
EXPLOSION WALL, HORIZONTAL SECTION
BETWEEN CABLE ANCHORS

ER-12-EN



GENERAL GUIDANCE

TOP ELEMENT OF EXPLOSION WALL WILL BE CUT IN WORKING SITE IF NECESSARY. RAILS MUST NOT BE FASTENED TO EACH OTHER.

PRINCIPLE MASTER DETAIL, NOT FOR DIMENSIONING.
 TURUN PELTI JA ERISTYS LTD, ALL RIGHTS RESERVED



TURUN PELTI JA ERISTYS OY
 VARESPELLONTIE 10
 21500 PIIKKIÖ

DATE
 04.2020

EXPLOSION HATCH
 VERTICAL SECTION

ER-13-EN