

EXPLOSION
WALL
DETAILS

TYPE

ER-10-EN

FASTENING TO CONCRETE COLUMN

ER-11-EN

EXTERNAL CORNER, CONCRETE COLUMN

ER-12-EN

CONCRETE COLUMN, BETWEEN CABLE ANCHORS

ER-13-EN

EXPLOSION HATCH

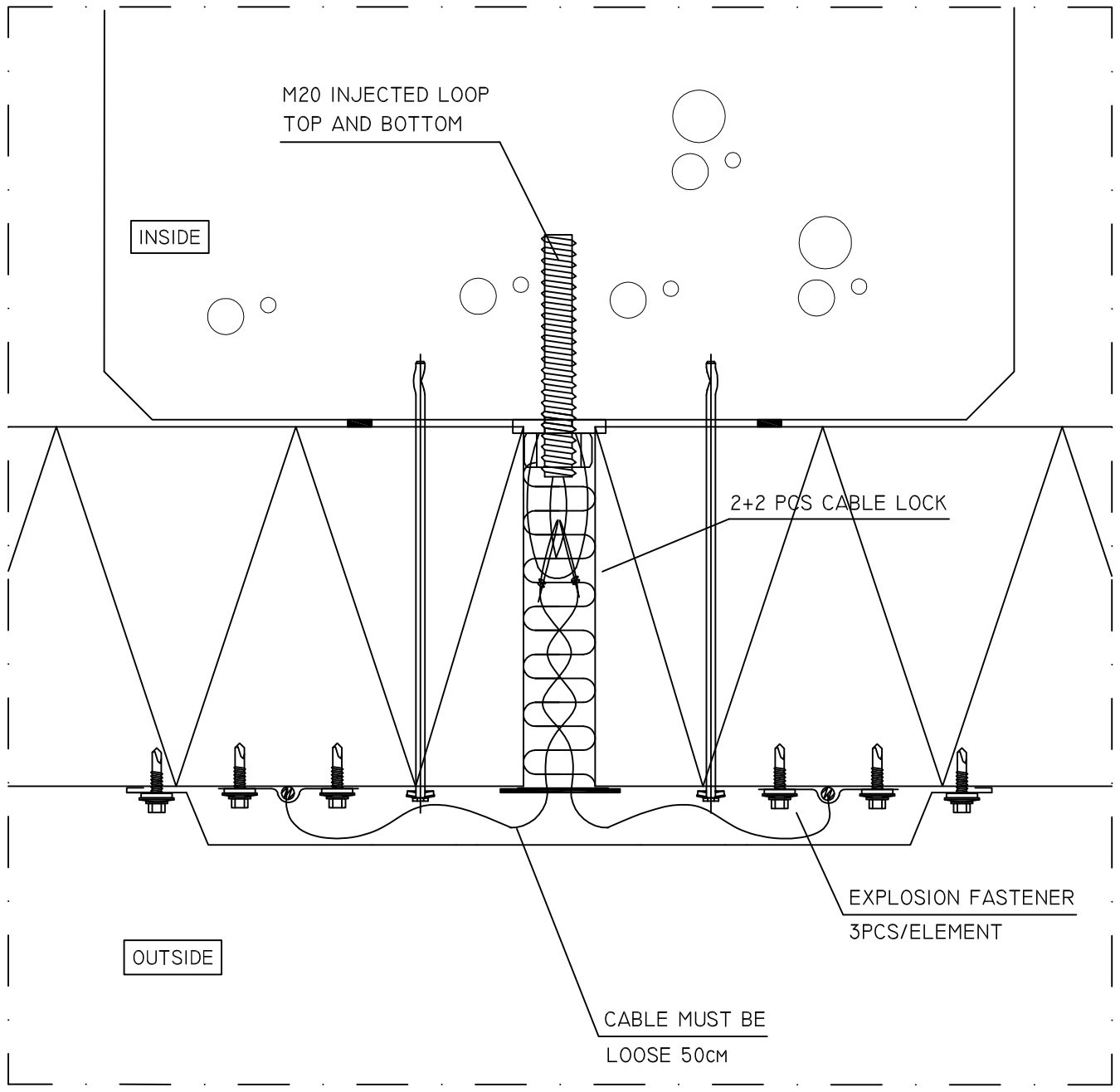
TPE SPIRIT LTD, ALL RIGHTS RESERVED



TPE SPIRIT OY
TEHDASTIE 17
31400 SOMERO

11.2016

TSP EXPLOSION DETAILS
SHEET OF CONTENT



GENERAL GUIDANCE

M20 FASTENER FOR COLUMNS BY ELEMENT DESIGNING. EXPLOSION CABLE WILL BE LOCKED TO M20 LOOP WITH CABLE LOCKS. CABLE WILL BE FASTENED WITH EXPLOSION FASTENER TO SURFACE OF ELEMENT (3 PCS/ELEMENT). OTHER GENERAL INSTRUCTIONS BY BASIC DETAILS.

PRINCIPLE MASTER DETAIL, NOT FOR DIMENSIONING.
TPE SPIRIT LTD, ALL RIGHTS RESERVED

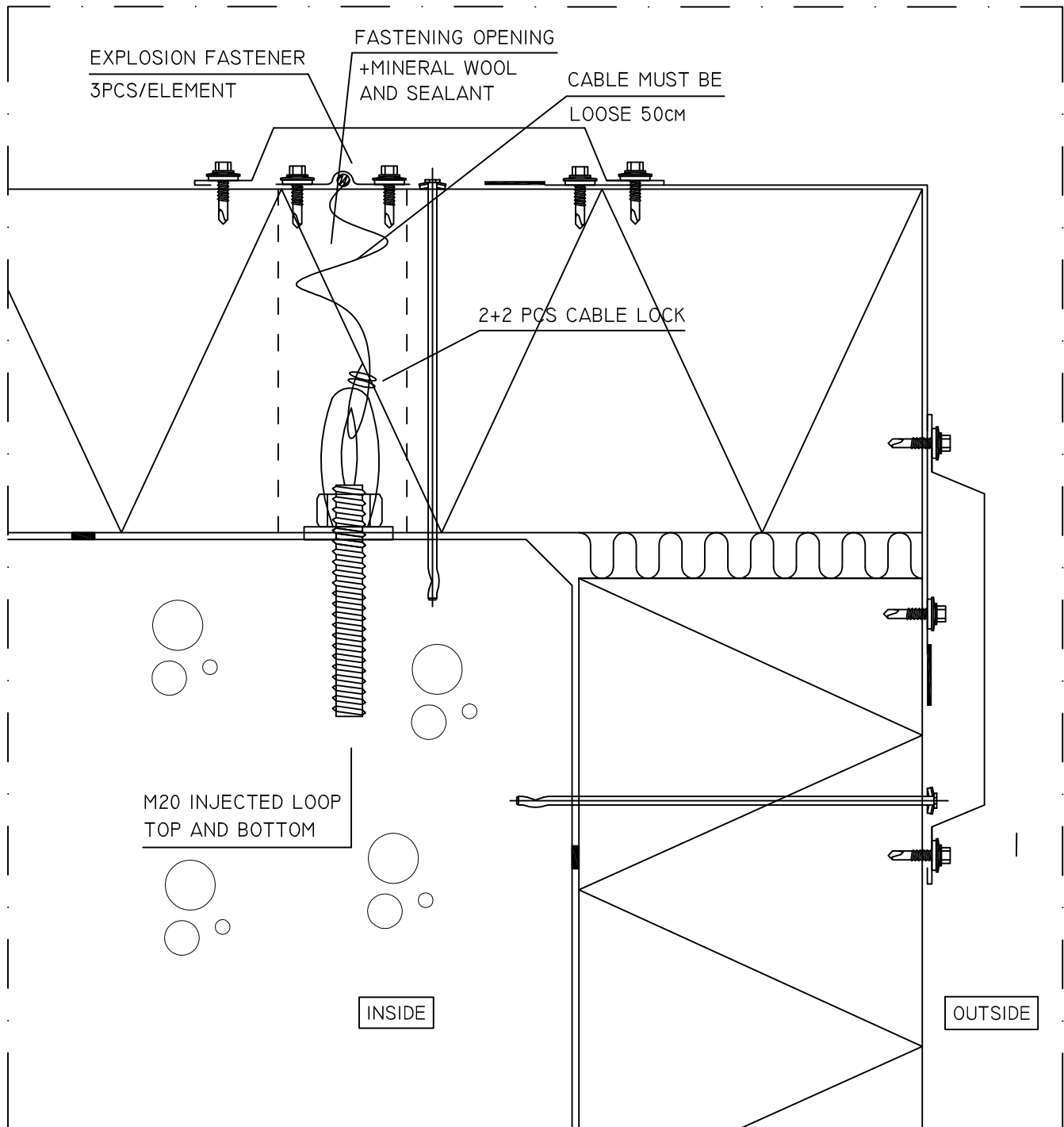
TPE SPIRIT PANEL

TPE SPIRIT OY
TEHDASTIE 17
31400 SOMERO

PVM.
09.2016

FASTENING TO CONCRETE COLUMN
EXPLOSION WALL, HORIZONTAL SECTION

ER-10-EN



GENERAL GUIDANCE

M20 FASTENER FOR COLUMNS BY ELEMENT DESIGNING. EXPLOSION CABLE WILL BE LOCKED TO M20 LOOP WITH CABLE LOCKS. CABLE WILL BE FASTENED WITH EXPLOSION FASTENER TO SURFACE OF ELEMENT (3 PCS/ELEMENT). OTHER GENERAL INSTRUCTIONS BY BASIC DETAILS.

PRINCIPLE MASTER DETAIL, NOT FOR DIMENSIONING.
TPE SPIRIT LTD, ALL RIGHTS RESERVED

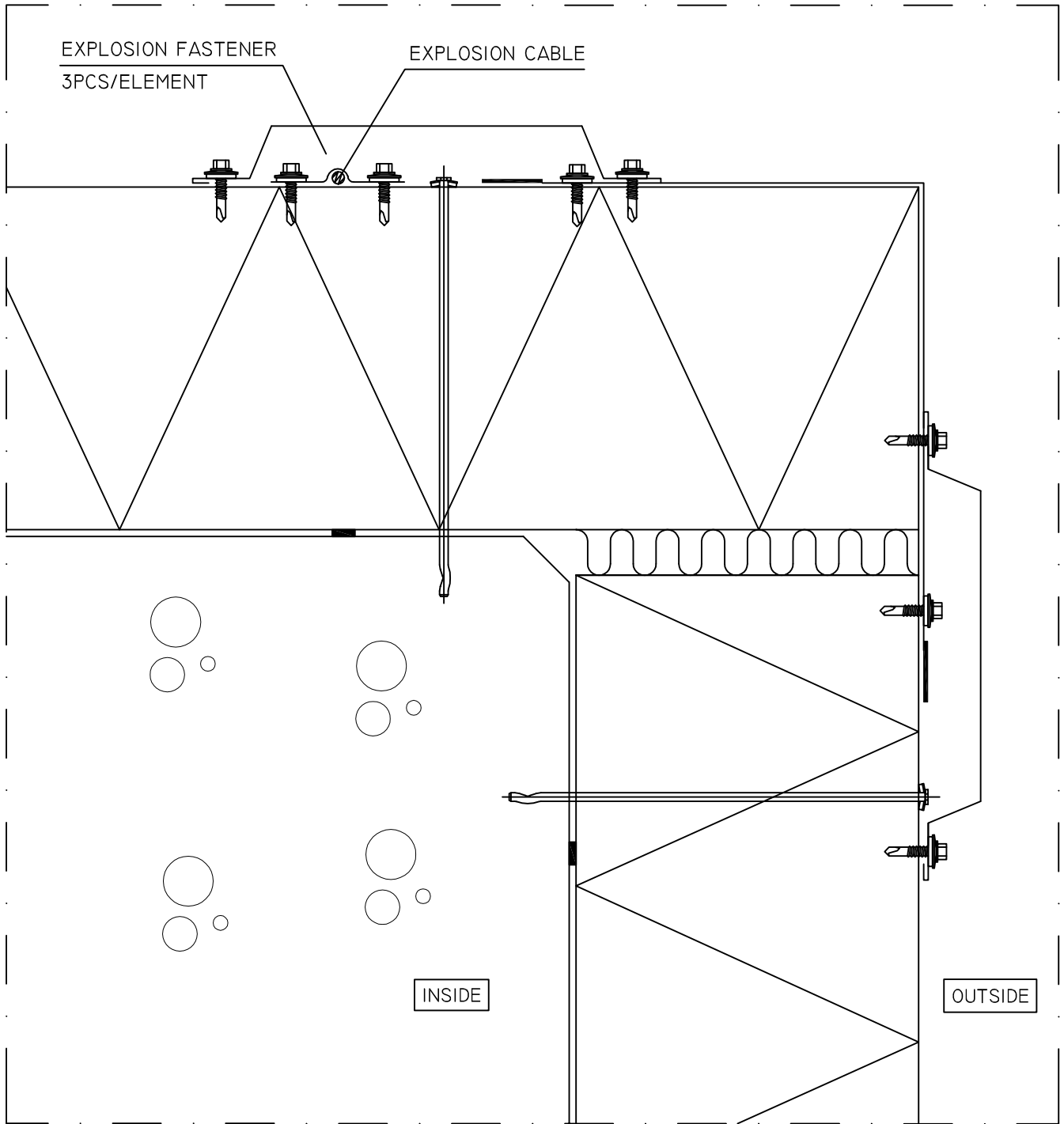
TPE SPIRIT PANEL

TPE SPIRIT OY
TEHDASTIE 17
31400 SOMERO

PVM.
09.2016

EXTERNAL CORNER, CONCRETE COLUMN
EXPLOSION WALL, HORIZONTAL SECTION

ER-II-EN



GENERAL GUIDANCE

M20 FASTENER FOR COLUMNS BY ELEMENT DESIGNING. EXPLOSION CABLE WILL BE LOCKED TO M20 LOOP WITH CABLE LOCKS. CABLE WILL BE FASTENED WITH EXPLOSION FASTENER TO SURFACE OF ELEMENT (3 PCS/ELEMENT). OTHER GENERAL INSTRUCTIONS BY BASIC DETAILS.

PRINCIPLE MASTER DETAIL, NOT FOR DIMENSIONING.
TPE SPIRIT LTD, ALL RIGHTS RESERVED

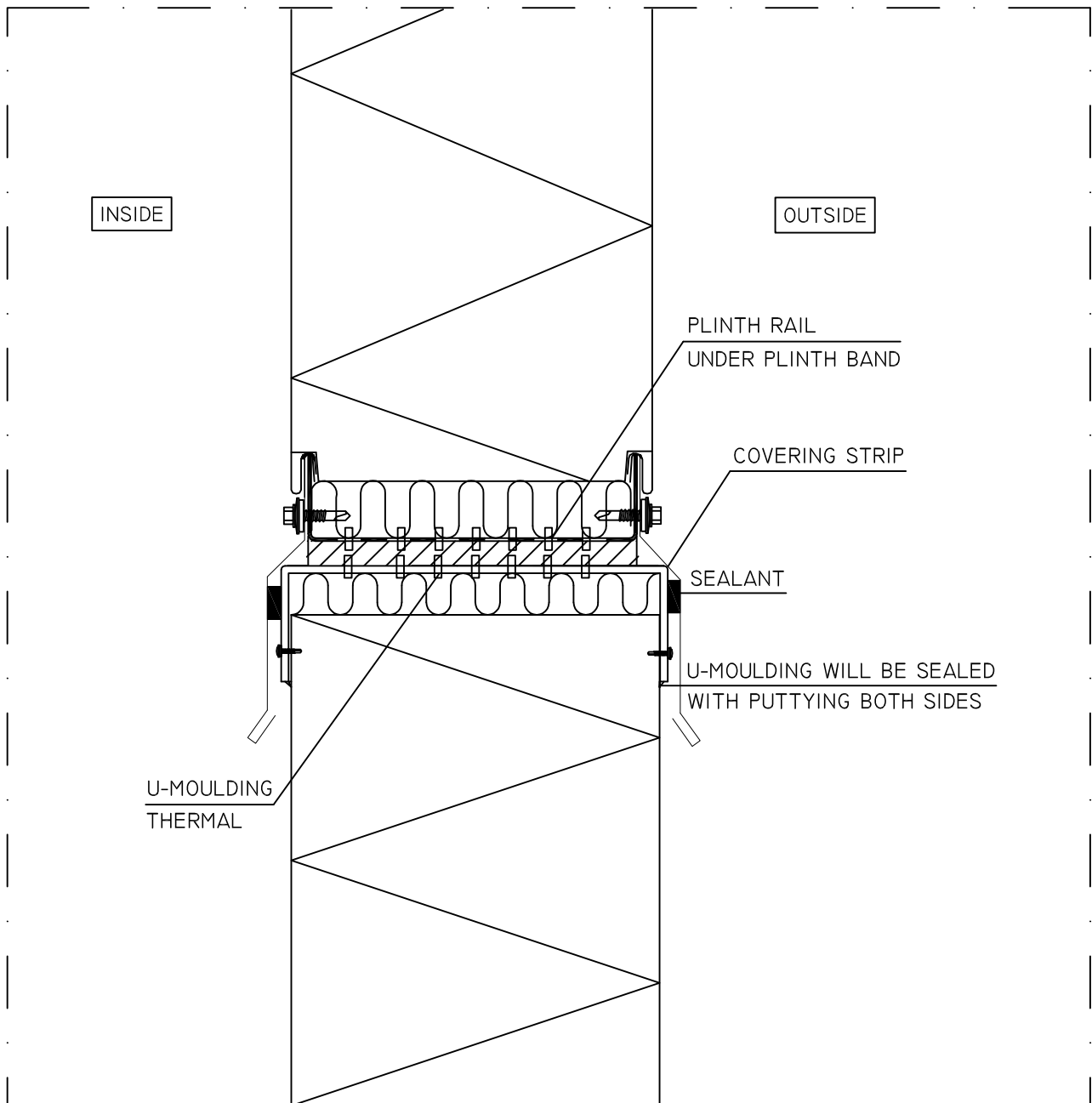
TPE SPIRIT PANEL

TPE SPIRIT OY
TEHDASTIE 17
31400 SOMERO

PVM.
09.2016

EXTERNAL CORNER, CONCRETE COLUMN
EXPLOSION WALL, HORIZONTAL SECTION
BETWEEN CABLE ANCHORS

ER-I2-EN



GENERAL GUIDANCE

TOP ELEMENT OF EXPLOSION WALL WILL BE CUT IN WORKING SITE IF NECESSARY. RAILS MUST NOT BE FASTENED TO EACH OTHER.

PRINCIPLE MASTER DETAIL, NOT FOR DIMENSIONING.
TPE SPIRIT LTD, ALL RIGHTS RESERVED

TPE SPIRIT PANEL

TPE SPIRIT OY
TEHDASTIE 17
31400 SOMERO

PVM.
09.2016

EXPLOSION HATCH
VERTICAL SECTION

ER-I3-EN